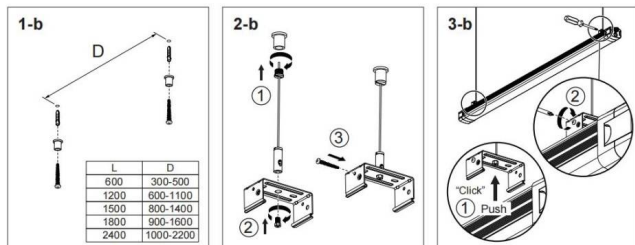
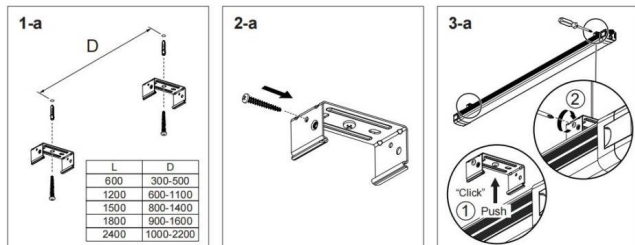
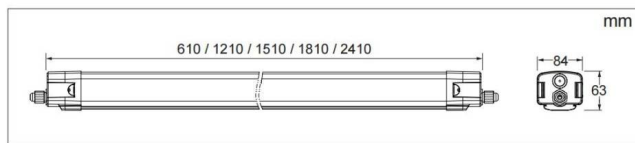
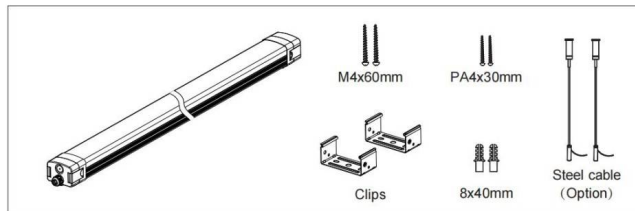
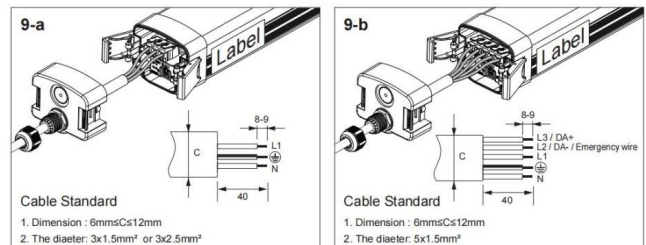
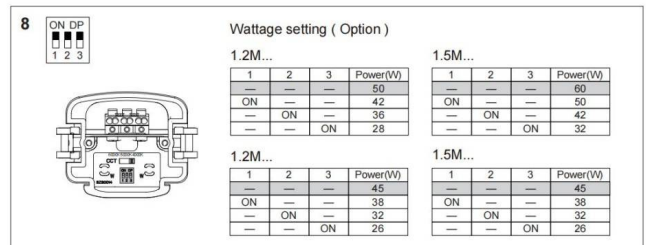
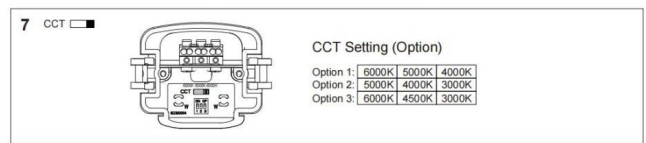
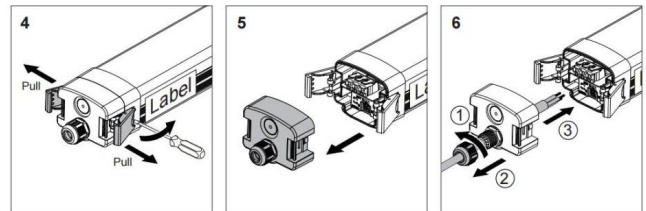




- Installation and wiring of luminaire must be in accordance with all applicable local codes.
- Installation, inspection, and maintenance of luminaires should be performed by a qualified electrician.
- DO NOT make or alter any open holes in the luminaire. Do not modify the luminaire.
- DO NOT install damaged product.
- Make sure electrical power is OFF before and during installation and maintenance.
- Make sure the equipment is properly grounded.
- Make sure the supply voltage is same as the rated fixture voltage.



2



3

Cable Standard
1. Dimension : 6mmxCs12mm
2. The diafer: 3x1.5mm² or 3x2.5mm²

Cable Standard
1. Dimension : 6mmxCs12mm
2. The diafer: 5x1.5mm²